
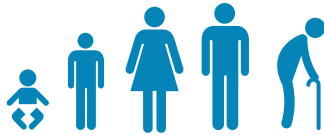


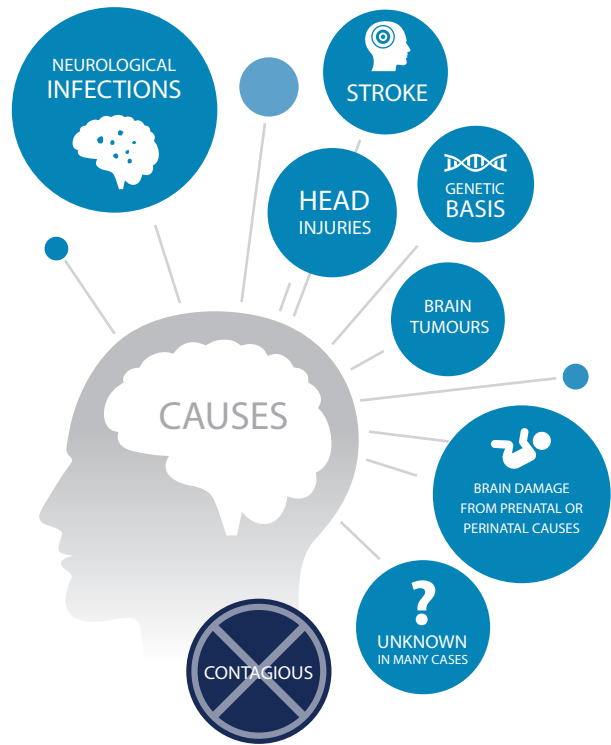
WHAT IS epilepsy?

A NEUROLOGICAL CONDITION characterized by *recurrent seizures*

Seizures are due to *brief disturbances* in the *electrical functions* of the brain

Epilepsy affects people of all ages

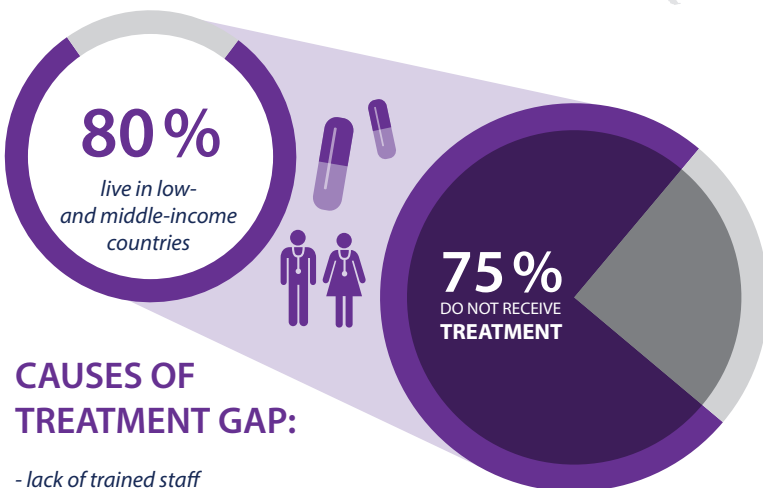


What is the IMPACT of epilepsy?

50 000 000

More than 50 million people are living with epilepsy globally

3-6 TIMES
↑ GREATER RISK OF PREMATURE DEATH



CAUSES OF TREATMENT GAP:

- lack of trained staff
- poor access to anti-epileptic medicines
- societal misconceptions
- poverty
- low prioritization for the treatment of epilepsy



STIGMA & DISCRIMINATION



FAMILY

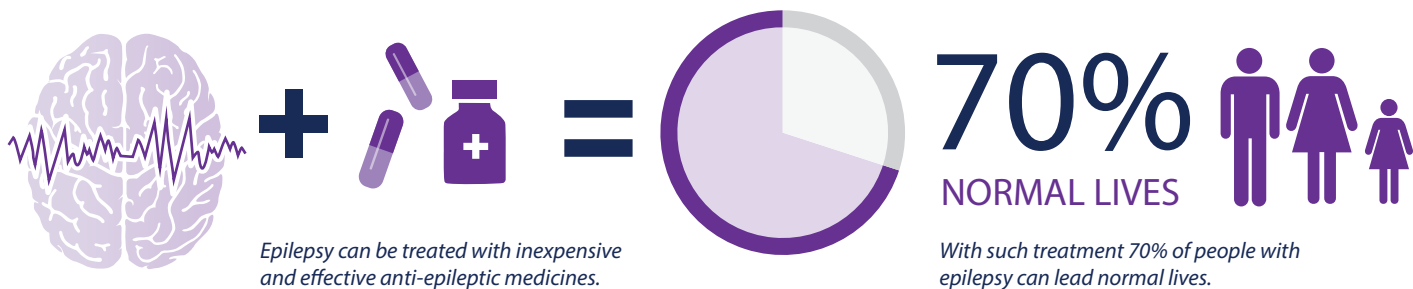


WORK



SOCIAL STANDING

What is the SOLUTION?



WHO can do WHAT?

